

Pardey does a Lutyens for the 21st Century

Architect says home in the Surrey Hills is what proto-Modernist legend would have built today

John Pardey Architects has submitted plans under the country house clause for this 1,430m² home in rural Surrey.

Sitting in a wooded site in Munstead, in the Surrey Hills, the house is on the road leading to Edwin Lutyens' Grade I-listed Arts and Crafts house,

Orchards, completed in 1879. The Pardey-designed house features a completely glazed ground floor set beneath an overhanging first floor.

Its largely open-plan ground floor is broken up by four 'boxes' clad in polished plaster and timber veneer. These contain a

cloakroom, TV room, cinema, and pantry.

The first floor, with six bedrooms and a roof garden, is set behind 4.5m-tall, off-white, glass-reinforced-concrete fins, which offer both shading and privacy.

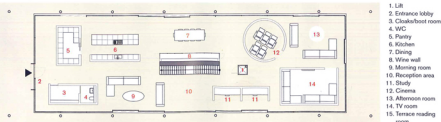
According to the practice, the scheme 'attempts to create

a house that Lutyens would design if he had the technical means that lie in our hands in today's society, building from the architectural legacy of the country house and utilising modern methods of construction'.

Levni Mark @markitecture



Ground floor plan



First floor plan

