

COMPETITION

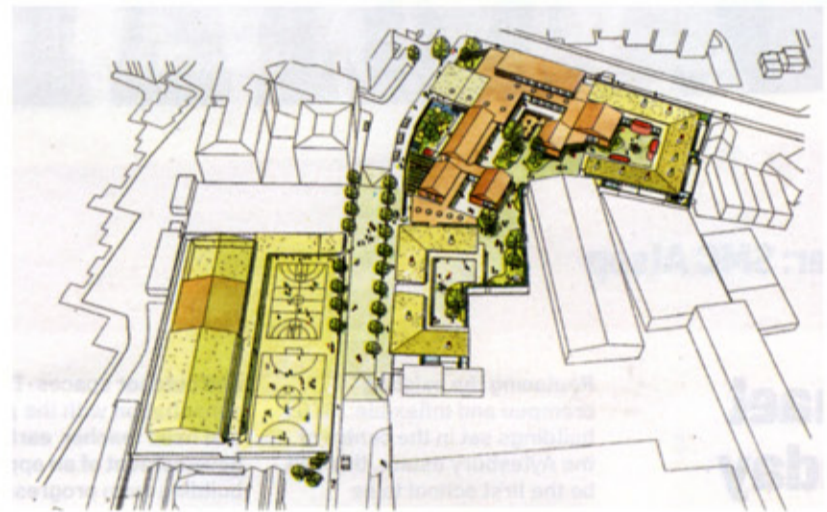
Winner: HKR with John Parry Architects and Colin Stansfield-Smith



Eveline Lowe Primary School

Grade II listed, the existing 1960s school is modest and unassuming, but when built its educational philosophy was innovative and influential. The winning team wanted to retain some of the school's original aura, while making better use of the limited site to create a more attractive environment, and to integrate the infant and junior schools which will increase capacity.

To this end new classroom buildings on piloti were added at first floor level — perhaps not the most obvious place to build — which allowed the architect to form a new enclosure around the school buildings. This will become a sanctuary for play and learning, where the boundary itself becomes part of the outdoor environment.



van Heyningen & Haward

In this design existing buildings are adapted and extended, centred on the hub which contains community facilities. The cladding of the new building wraps around the

site to create a revitalised street presence, leading to a new main entrance with a canopied gathering space. A planted green wall and two new gardens are also included.



Flacq

Building on top of the existing building creates a two-storey school with infants on the lower floor, and juniors upstairs. The road which currently separates the two

buildings is closed off. The entrance is into a courtyard, while the structure is designed to give nursery parents more access to the site. Other ideas include a new ecology garden.

Haverstock Associates

The scheme looks back to the strengths of the existing school and reinterprets ideas to make it appropriate for new school numbers and current and future needs. Teaching

spaces range from window seats and reading tubes in walls to large internal amphitheatres and central piazzas between the classrooms.

