

## John Pardey 'far out' house realised

Following a planning battle won on appeal, John Pardey Architects' 'modern timber-framed Welsh vernacular' home comes to fruition

**WEST WALES** John Pardey Architects has completed this £975,000 home in the Pembrokeshire Coast National Park overlooking the Newport Estuary in western Wales.

Replacing a run-down house on the plot on the northern side of the bay, the 326m<sup>2</sup> five-bedroom scheme features an open-plan top floor seated beneath a timber-raftered roof.

This living space has a full height, sliding glazed screen opening onto a timber-decked

balcony. The lower floor houses four bedrooms and connects to the hillside garden.

Described by the practice as 'modern timber-framed Welsh vernacular', the building is sheltered from the road and cold north winds by a heavy-rendered walled enclosure, which houses the services rooms and circulation.

Explaining the contested planning process, practice founder John Pardey said: '[The planning committee] was challenged by the design and,

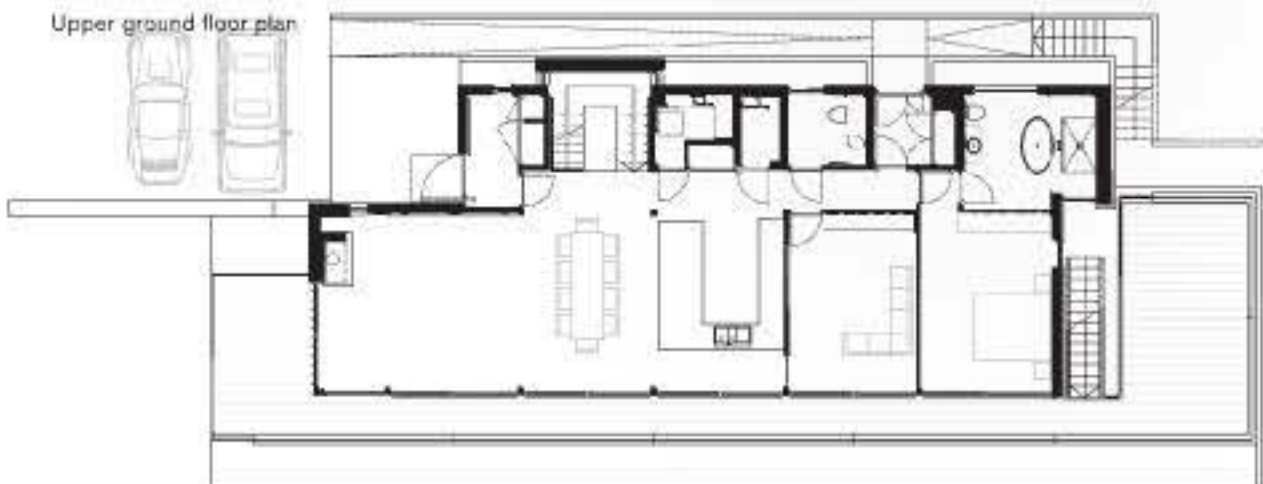
although they conceded that it was "a good design", they also informed us that it was "too far out for them" and that it was "not traditional enough". So they bluntly refused it.'

The plans were approved on appeal in 2009.

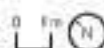
The scheme was designed as a holiday home for a 'very glamorous' couple from Surrey and their four children and is expected in the long term, to become their retirement retreat.

*Richard Waite*

Upper ground floor plan



Lower ground floor plan



ALL IMAGES JAMES MORRIS